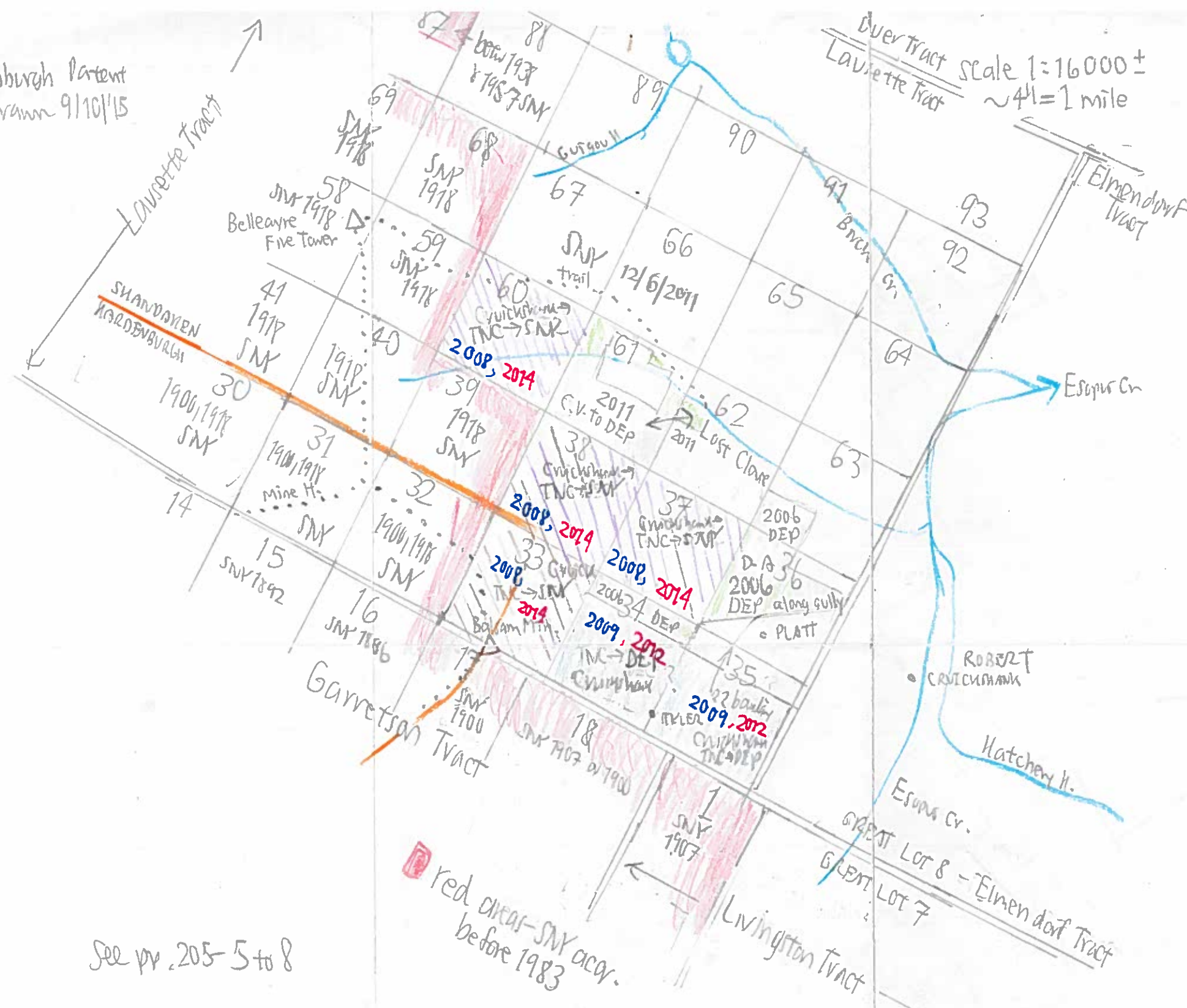


Kavdenburgh Patent
lots drawn 9/10/15



See pp. 205-5 to 8

202-74A

Last Clove - Balsam Mt. acquisitions

(This is an enlargement of p. 202-71)

Cross-references

Liz Cruz's smaller scale version of this map - Page 202-71

- MK field notes
- Lost Clove
 - 2013 Gonzalez p-202-75
 - 2014 Birns p-202-82
 - Balsam Mt. Summit
 - 2015 Twan p-210-48
 - Crickshank
 - 2015 John Sr. & James p-210-52
 - 2015 John Jr. - p-210-56

MK interviews p-210-54A, 60

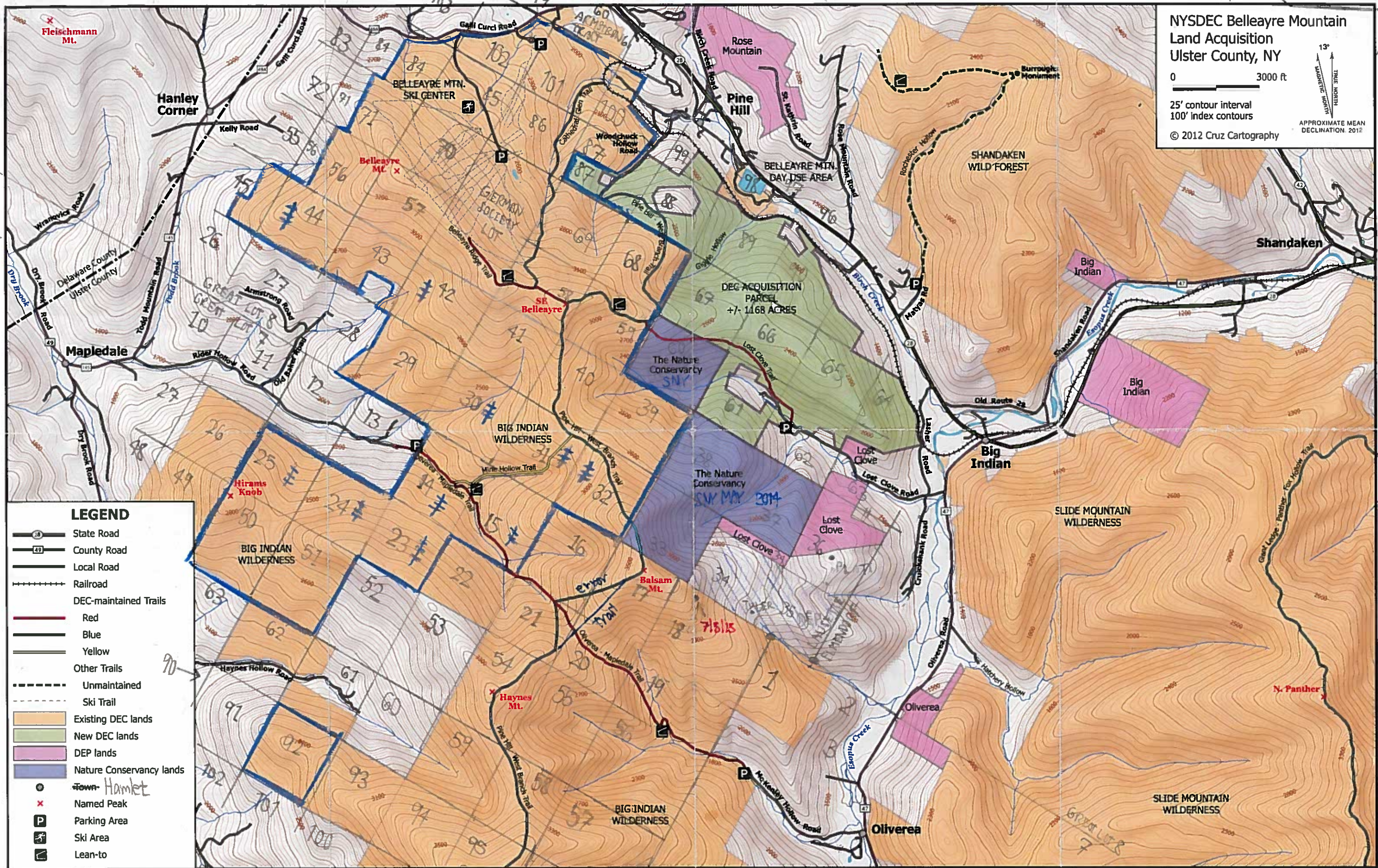
Newspapers Newsletter articles -

- 2008 p-210-41
- 2014 p-210-47

Scale: 3000 ft/mch or $\frac{1}{3000 \times 12} = \frac{1}{36000}$

from Liz Cruz 10/11/12 (202-74)

LAUSSETTE / GARRETSON



NYSDEC Belleayre Mountain Land Acquisition
 Ulster County, NY

0 3000 ft

25' contour interval
 100' index contours

© 2012 Cruz Cartography

13°
 TRUE NORTH
 MAGNETIC NORTH
 APPROXIMATE MEAN DECLINATION 2012

LEGEND

- State Road
- County Road
- Local Road
- Railroad
- DEC-maintained Trails
- Red
- Blue
- Yellow
- Other Trails
- Unmaintained
- Ski Trail
- Existing DEC lands
- New DEC lands
- DEP lands
- Nature Conservancy lands
- Town - Hamlet
- Named Peak
- Parking Area
- Ski Area
- Lean-to

at MAMM
 TNC soil + SNR 2014 (where?)
 From Liz Cruz 10/11/12 at MAMM

99 EAGLE MTN. GARRETSON TRACT / LIVINUSTON TRACT

Addendum 1/8/17

SNK appropriation in March 1918 from Belle Ayre Conservation Co. [= Outback Lumber Co. of John Ham], ca-3000 acres, and from Back Woods Club, ca-1500 acres. These lots are outlined in dark blue.

The ≠ indicates 8 lots appropriated in 1918 but purchased earlier, in Garretts Tract Lots 14, 15, 23, 24, 25, and in Laurette Tract 30, 31, 32.

backed up at CCCD 1/19/17

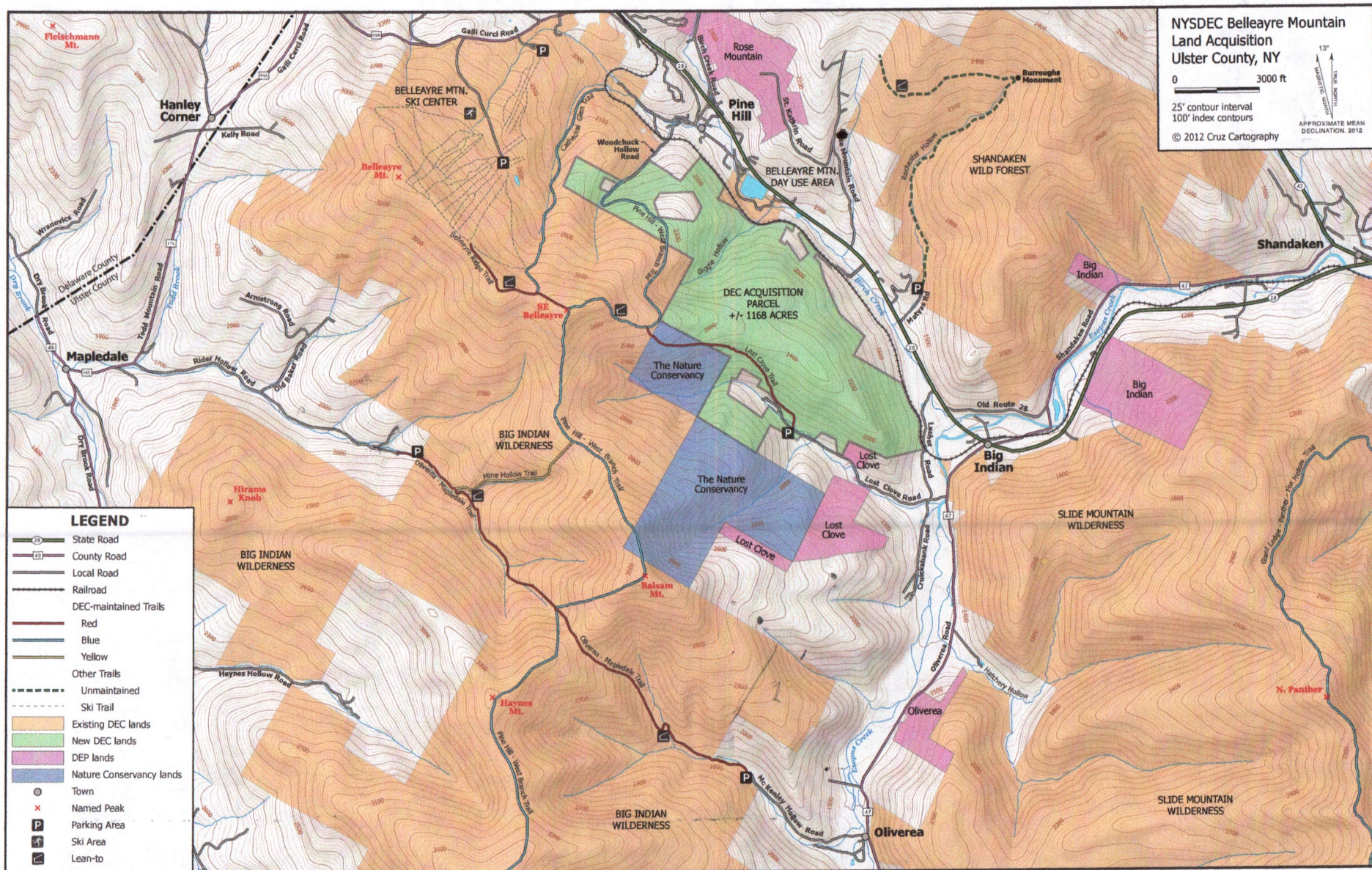
lots
Draw 1918 ^{lots} acy. in
1:24000 1/17, then
onto MK map.

P. 202-74B

From Ltz Cruz na Alan V Ja, printed 7/16/12

2012

See P-202-74 for enlargement



More history (continued)
from page 210-55

9/9/15
Compiled

202-74C

This page combines field notes from:

- pp. 202-75 & 76 of 7/29/13
- pp. 202-82 to 84 + 202-77 of 9/26/14
- pp. 210-48 to 51 of 7/5/15
- pp. 210-52 to 55 of 9/7/15

pp 205-1 to 4

Plus news clippings of the SNK & DEP acquisitions on pp. =

pp 205-5 to 8

1. Liz Cruz's maps on pp. 202-71 & 74 in 2012 do not show the latest acq. of 160 acres by SNK from Churchshanks. James Churchshank says lot is to the south west of Platt's Farm. But new boundaries are confusing. Where are they?
2. Churchshanks sold to JNC in 2006 (?), which in turn sold peripheral acres to DEP as wilderness buffers, and Balsam Mtn. core areas to DEC as wilderness.
3. James says that the area SW of Platt Farm was logged in 2004 to 2006, locally heavily so opening up the canopy. The 9/7/15 hike on p. 210-52ff passed through some of these openings.
4. The 9/26/14 hike, p. 202-82ff, ended in one of these openings, probably a NW continuation above Platt Farm. Return there to locate ^{exactly} ^
5. James says that the earlier logging SW of Platt Farm occurred in mid- to late 1970s, as evidenced by older stumps. Could the log roads followed on 7/29/13 & 9/26/14 been built also during this period? MK estimated 40 years in 2014, dating the roads back to 1974.
6. Platt farm clearing appears on Ulster Co. Soil Survey, p. 13 (1979).
7. Schmitt's 1917 map shows a 1911 conifer (!!) logging on ridge between Platt's farm and "Tyler Hollow".